



SOUTHEAST GAP ANALYSIS PROJECT



Species Modeling Report

Plainbelly Water Snake

Nerodia erythrogaster

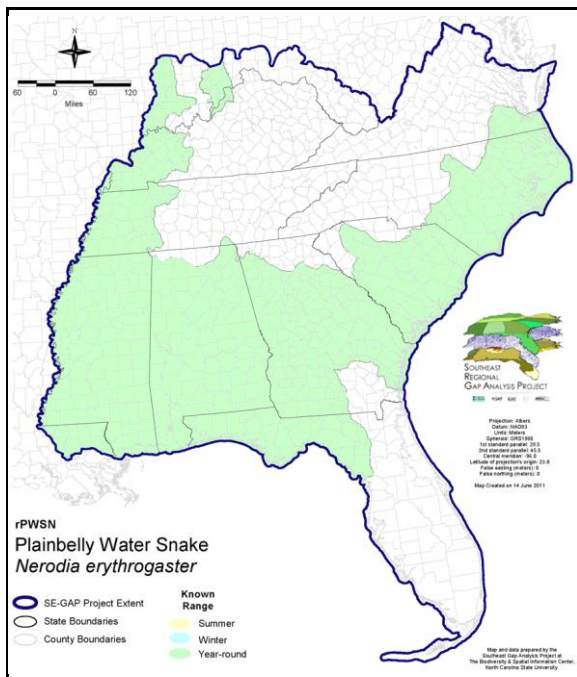
Taxa: Reptilian
 Order: Squamata
 Family: Colubridae

SE-GAP Spp Code: **rPWSN**

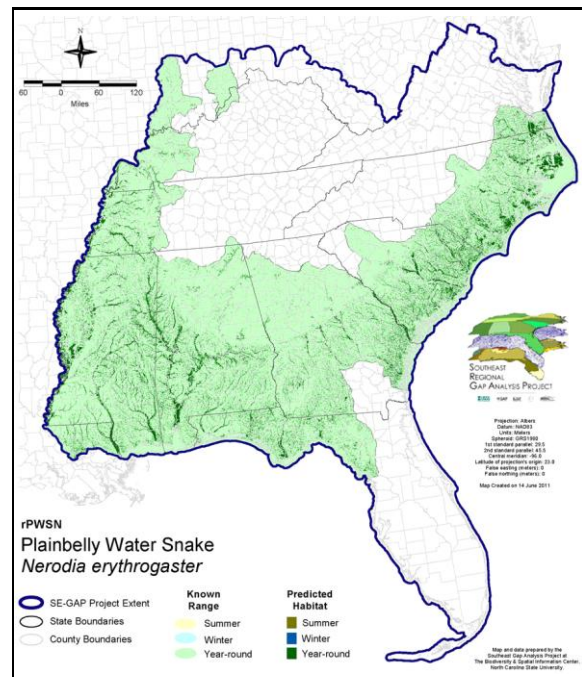
ITIS Species Code: 174244

NatureServe Element Code: ARADB22020

KNOWN RANGE:



PREDICTED HABITAT:



Range Map Link: http://www.basic.ncsu.edu/segap/datazip/maps/SE_Range_rPWSN.pdf

Predicted Habitat Map Link: http://www.basic.ncsu.edu/segap/datazip/maps/SE_Dist_rPWSN.pdf

GAP Online Tool Link: <http://www.gapservice.ncsu.edu/segap/segap/index2.php?species=rPWSN>

Data Download: http://www.basic.ncsu.edu/segap/datazip/region/vert/rPWSN_se00.zip

PROTECTION STATUS:

Reported on March 14, 2011

Federal Status: ---

State Status: KY (N), NM (E)

NS Global Rank: G5

NS State Rank: AL (S5), AR (S5), DE (S1), FL (SNR), GA (S5), IA (S1), IL (SNR), IN (SNR), KS (S5), KY (S5), LA (S5), MD (S4), MI (SNR), MO (SNR), MS (S5), NC (S5), NM (S1S2), OH (SNR), OK (S4), SC (SNR), TN (S5), TX (S5), VA (S4)

SUMMARY OF PREDICTED HABITAT BY MANAGMENT AND GAP PROTECTION STATUS:

	US FWS		US Forest Service		Tenn. Valley Author.		US DOD/ACOE	
	ha	%	ha	%	ha	%	ha	%
Status 1	58,957.9	< 1	5,357.7	< 1	0.0	0	0.0	0
Status 2	156,467.7	2	11,712.2	< 1	0.0	0	524.2	< 1
Status 3	976.8	< 1	196,249.8	3	4,177.8	< 1	82,017.5	1
Status 4	12.0	< 1	0.0	0	0.0	0	5.1	< 1
Total	216,414.4	3	213,319.7	3	4,177.8	< 1	82,546.8	1
	US Dept. of Energy		US Nat. Park Service		NOAA		Other Federal Lands	
	ha	%	ha	%	ha	%	ha	%
Status 1	0.0	0	8,211.9	< 1	10.1	< 1	0.0	0
Status 2	0.0	0	12.2	< 1	1,365.0	< 1	0.0	0
Status 3	15,713.6	< 1	1,868.8	< 1	0.0	0	1,136.0	< 1
Status 4	0.0	0	0.0	0	0.0	0	0.0	0
Total	15,713.6	< 1	10,092.9	< 1	1,375.1	< 1	1,136.0	< 1
	Native Am. Reserv.		State Park/Hist. Park		State WMA/Gameland		State Forest	
	ha	%	ha	%	ha	%	ha	%
Status 1	0.0	0	117.5	< 1	1.2	< 1	0.0	0
Status 2	0.0	0	565.1	< 1	215,282.8	3	0.0	0
Status 3	1,755.7	< 1	80,965.6	1	95,880.1	1	40,379.0	< 1
Status 4	0.0	0	0.0	0	7,954.5	< 1	5.2	< 1
Total	1,755.7	< 1	81,648.2	1	319,118.5	4	40,384.3	< 1
	State Coastal Reserve		ST Nat.Area/Preserve		Other State Lands		Private Cons. Easemt.	
	ha	%	ha	%	ha	%	ha	%
Status 1	0.0	0	1,845.2	< 1	0.0	0	0.0	0
Status 2	10,573.1	< 1	37,862.0	< 1	0.0	0	135.3	< 1
Status 3	0.0	0	836.3	< 1	1,448.1	< 1	23,990.0	< 1
Status 4	0.0	0	0.0	0	623.7	< 1	0.0	0
Total	10,573.1	< 1	40,543.5	< 1	2,071.8	< 1	24,125.3	< 1
	Private Land - No Res.		Water		Overall Total			
	ha	%	ha	%	ha	%		
Status 1	0.0	0	0.0	0	74,501.4	< 1		
Status 2	0.0	0	0.0	0	434,499.7	6		
Status 3	352.6	< 1	0.0	0	547,747.7	10		
Status 4	6,372,741.4	83	22,613.7	< 1	6,411,898.1	84		
Total	6,373,094.0	83	22,613.7	< 1	7,468,646.9	100		

GAP Status 1: An area having permanent protection from conversion of natural land cover and a mandated management plan in operation to maintain a natural state within which disturbance events (of natural type, frequency, and intensity) are allowed to proceed without interference or are mimicked through management.

GAP Status 2: An area having permanent protection from conversion of natural land cover and a mandated management plan in operation to maintain a primarily natural state, but which may receive use or management practices that degrade the quality of existing natural communities.

GAP Status 3: An area having permanent protection from conversion of natural land cover for the majority of the area, but subject to extractive uses of either a broad, low-intensity type or localized intense type. It also confers protection to federally listed endangered and threatened species throughout the area.

GAP Status 4: Lack of irrevocable easement or mandate to prevent conversion of natural habitat types to anthropogenic habitat types. Allows for intensive use throughout the tract. Also includes those tracts for which the existence of such restrictions or sufficient information to establish a higher status is unknown.

PREDICTED HABITAT MODEL(S):

Year-round Model:

Habitat Description: Plainbelly (also called copperbelly/redbelly/yellowbelly) water snakes occur in diverse aquatic habitats. They are frequently associated with river swamps and floodplains, slow-flowing streams, and lakes or ponds with swampy margins, but may also inhabit marshes, ditches, and other permanent bodies of water. Although primarily aquatic, they are occasionally observed under surface cover at some distance from water.

*Quoted directly from compiled state notes. Amy Silvano 23Aug05

Ecosystem Classifiers: All wetlands (excluding Brackish & Freshwater marshes and FLatwoods). Amy Silvano 23Aug05

Hydrography Mask:

Freshwater Only

Slow Current Only

Utilizes flowing water features with buffers of 250m from and 250m into selected water features.

Utilizes open water features with buffers of 250m from and 250m into selected water features.

Utilizes wet vegetation features with buffers of 250m from and unlimited into selected vegetation features.

Selected Map Units:

Functional Group	Map Unit Name
Brackish Tidal Marsh & Wetland	Atlantic Coastal Plain Northern Tidal Wooded Swamp
Brackish Tidal Marsh & Wetland	Atlantic Coastal Plain Southern Tidal Wooded Swamp
Brackish Tidal Marsh & Wetland	East Gulf Coastal Plain Tidal Wooded Swamp
Water	Open Water (Fresh)
Wetlands	Atlantic Coastal Plain Blackwater Stream Floodplain Forest - Forest Modifier
Wetlands	Atlantic Coastal Plain Blackwater Stream Floodplain Forest - Herbaceous Modifier
Wetlands	Atlantic Coastal Plain Brownwater Stream Floodplain Forest
Wetlands	Atlantic Coastal Plain Clay-Based Carolina Bay Forested Wetland
Wetlands	Atlantic Coastal Plain Clay-Based Carolina Bay Herbaceous Wetland
Wetlands	Atlantic Coastal Plain Depression Pondshore
Wetlands	Atlantic Coastal Plain Large Natural Lakeshore
Wetlands	Atlantic Coastal Plain Nonriverine Swamp and Wet Hardwood Forest - Taxodium/Nyssa Modifier
Wetlands	Atlantic Coastal Plain Nonriverine Swamp and Wet Hardwood Forest - Oak Dominated Modifier
Wetlands	Atlantic Coastal Plain Northern Basin Peat Swamp
Wetlands	Atlantic Coastal Plain Northern Basin Swamp and Wet Hardwood Forest
Wetlands	Atlantic Coastal Plain Northern Pondshore
Wetlands	Atlantic Coastal Plain Peatland Pocosin
Wetlands	Atlantic Coastal Plain Small Blackwater River Floodplain Forest
Wetlands	Atlantic Coastal Plain Small Brownwater River Floodplain Forest
Wetlands	Atlantic Coastal Plain Streamhead Seepage Swamp, Pocosin, and Baygall
Wetlands	Central Appalachian Floodplain - Forest Modifier
Wetlands	Central Appalachian Floodplain - Herbaceous Modifier
Wetlands	Central Appalachian Riparian - Forest Modifier
Wetlands	Central Appalachian Riparian - Herbaceous Modifier
Wetlands	Central Florida Herbaceous Pondshore
Wetlands	Central Interior Highlands and Appalachian Sinkhole and Depression Pond
Wetlands	East Gulf Coastal Plain Interior Shrub Bog
Wetlands	East Gulf Coastal Plain Large River Floodplain Forest - Forest Modifier
Wetlands	East Gulf Coastal Plain Large River Floodplain Forest - Herbaceous Modifier
Wetlands	East Gulf Coastal Plain Northern Depression Pondshore
Wetlands	East Gulf Coastal Plain Northern Seepage Swamp
Wetlands	East Gulf Coastal Plain Small Stream and River Floodplain Forest

Wetlands	East Gulf Coastal Plain Southern Depression Pondshore
Wetlands	Floridian Highlands Freshwater Marsh
Wetlands	Lower Mississippi River Bottomland and Floodplain Forest
Wetlands	Lower Mississippi River Bottomland Depressions - Forest Modifier
Wetlands	Lower Mississippi River Bottomland Depressions - Herbaceous Modifier
Wetlands	Mississippi River Low Floodplain (Bottomland) Forest
Wetlands	Mississippi River Riparian Forest
Wetlands	North-Central Appalachian Acidic Swamp
Wetlands	North-Central Appalachian Seepage Fen
Wetlands	North-Central Interior and Appalachian Rich Swamp
Wetlands	South-Central Interior Large Floodplain - Forest Modifier
Wetlands	South-Central Interior Large Floodplain - Herbaceous Modifier
Wetlands	South-Central Interior Small Stream and Riparian
Wetlands	Southern and Central Appalachian Bog and Fen
Wetlands	Southern Appalachian Seepage Wetland
Wetlands	Southern Coastal Plain Blackwater River Floodplain Forest
Wetlands	Southern Coastal Plain Nonriverine Basin Swamp
Wetlands	Southern Coastal Plain Seepage Swamp and Baygall
Wetlands	Southern Coastal Plain Spring-run Stream Aquatic Vegetation
Wetlands	Southern Piedmont Large Floodplain Forest - Forest Modifier
Wetlands	Southern Piedmont Large Floodplain Forest - Herbaceous Modifier
Wetlands	Southern Piedmont Seepage Wetland
Wetlands	Southern Piedmont/Ridge and Valley Upland Depression Swamp
Wetlands	Unconsolidated Shore (Lake/River/Pond)

CITATIONS: Ashton, R. E., Jr., and P. S. Ashton. 1981. Handbook of Reptiles and Amphibians of Florida. Part One: The Snakes. Windward Pub. Co., Miami, Florida. 176 pp.

Behler, J. L., and F. W. King. 1979. The Audubon Society field guide to North American reptiles and amphibians. Alfred A. Knopf, New York. 719 pp.

Collins, J. T. 1982. Amphibians and reptiles in Kansas. Second edition. Univ. Kansas Mus. Nat. Hist., Pub. Ed. Ser. 8. xiii + 356 pp.

Conant, R. 1975. A Field Guide to Reptiles and Amphibians of Eastern and Central North America. Second Edition. Houghton Mifflin Company, Boston, Massachusetts. xvii + 429 pp.

Conant, R. and J. T. Collins. 1991. A field guide to reptiles and amphibians: eastern and central North America. Third edition. Houghton Mifflin Co., Boston, Massachusetts. 450 pp.

Fitch, H. S. 1970. Reproductive cycles of lizards and snakes. Univ. Kansas Museum Natural History Miscellaneous Publication 52:1-247.

Lawson, R. 1987. Molecular studies of thamnophiine snakes: 1. The phylogeny of the genus *NERODIA*. J. Herpetology 21:140-157.

McCranie, J. R. 1990. *NERODIA ERYTHROGASTER*. Cat. Am. Amph. Rep. 500.1-500.8.

Minton, S. A., Jr. 1972. Amphibians and reptiles of Indiana. Indiana Academy Science Monographs 3. v + 346 pp.

Mount, R. H. 1975. The Reptiles and Amphibians of Alabama. Auburn University Agricultural Experiment Station, Auburn, Alabama. vii + 347 pp.

Tennant, A. 1984. The Snakes of Texas. Texas Monthly Press, Austin, Texas. 561 pp.

For more information:: SE-GAP Analysis Project / BaSIC
 127 David Clark Labs
 Dept. of Biology, NCSU
 Raleigh, NC 27695-7617
 (919) 513-2853
www.basic.ncsu.edu/segap

Compiled: 15 September 2011

This data was compiled and/or developed by the Southeast GAP Analysis Project at The Biodiversity and Spatial Information Center, North Carolina State University.