



SOUTHEAST GAP ANALYSIS PROJECT



Species Modeling Report

Pygmy Rattlesnake

Sistrurus miliarius

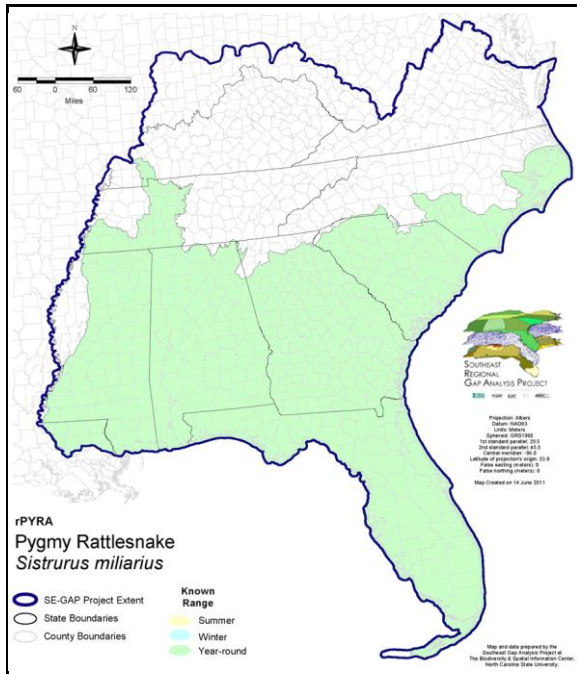
Taxa: Reptilian
Order: Squamata
Family: Viperidae

SE-GAP Spp Code: **rPYRA**

ITIS Species Code: 174302

NatureServe Element Code: ARADE03020

KNOWN RANGE:



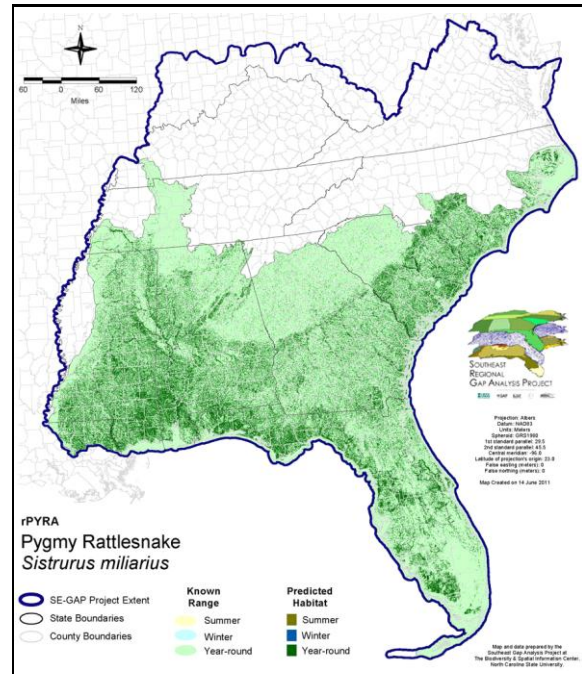
Range Map Link: http://www.basic.ncsu.edu/segap/datazip/maps/SE_Range_rPYRA.pdf

Predicted Habitat Map Link: http://www.basic.ncsu.edu/segap/datazip/maps/SE_Dist_rPYRA.pdf

GAP Online Tool Link: <http://www.gapservice.ncsu.edu/segap/segap/index2.php?species=rPYRA>

Data Download: http://www.basic.ncsu.edu/segap/datazip/region/vert/rPYRA_se00.zip

PREDICTED HABITAT:



PROTECTION STATUS:

Reported on March 14, 2011

Federal Status: ---

State Status: KY (N), MS (Non-game species in need of management), NC (SC)

NS Global Rank: G5

NS State Rank: AL (S4), AR (S4), FL (SNR), GA (S5), KY (S2), LA (S4), MO (S4), MS (S5), NC (S3), OK (S4), SC (SNR), TN (S2), TX (S5)

SUMMARY OF PREDICTED HABITAT BY MANAGMENT AND GAP PROTECTION STATUS:

	US FWS		US Forest Service		Tenn. Valley Author.		US DOD/ACOE	
	ha	%	ha	%	ha	%	ha	%
Status 1	128,059.1	< 1	5,489.3	< 1	0.0	0	0.0	0
Status 2	103,061.3	< 1	65,391.1	< 1	0.0	0	612.4	< 1
Status 3	617.9	< 1	722,732.3	4	7,548.3	< 1	353,285.1	2
Status 4	590.9	< 1	0.0	0	0.0	0	0.0	0
Total	232,329.2	1	793,612.7	4	7,548.3	< 1	353,897.5	2
	US Dept. of Energy		US Nat. Park Service		NOAA		Other Federal Lands	
	ha	%	ha	%	ha	%	ha	%
Status 1	0.0	0	36,058.6	< 1	65.5	< 1	11,883.3	< 1
Status 2	0.0	0	10,186.0	< 1	5,677.4	< 1	49.2	< 1
Status 3	44,228.6	< 1	147,673.4	< 1	0.0	0	3,256.8	< 1
Status 4	0.0	0	0.0	0	0.0	0	0.0	0
Total	44,228.6	< 1	193,918.0	1	5,742.9	< 1	15,189.4	< 1
	Native Am. Reserv.		State Park/Hist. Park		State WMA/Gameland		State Forest	
	ha	%	ha	%	ha	%	ha	%
Status 1	0.0	0	657.7	< 1	19.0	< 1	0.0	0
Status 2	0.0	0	2,401.4	< 1	283,596.0	2	0.0	0
Status 3	5,086.4	< 1	371,321.3	2	80,714.3	< 1	246,859.2	1
Status 4	0.0	0	< 0.1	< 1	48,082.8	< 1	36.3	< 1
Total	5,086.4	< 1	374,380.5	2	412,412.0	2	246,895.5	1
	State Coastal Reserve		ST Nat.Area/Preserve		Other State Lands		Private Cons. Easemt.	
	ha	%	ha	%	ha	%	ha	%
Status 1	0.0	0	3,685.7	< 1	0.0	0	0.0	0
Status 2	9,203.0	< 1	26,776.4	< 1	0.0	0	2,075.9	< 1
Status 3	0.0	0	17,338.8	< 1	9,625.3	< 1	66,857.8	< 1
Status 4	0.0	0	0.0	0	1,119.8	< 1	0.0	0
Total	9,203.0	< 1	47,800.8	< 1	10,745.1	< 1	68,933.7	< 1
	Private Land - No Res.		Water		Overall Total			
	ha	%	ha	%	ha	%		
Status 1	0.0	0	0.0	0	185,918.2	< 1		
Status 2	169.5	< 1	0.0	9	509,199.8	3		
Status 3	1,083.1	< 1	1.0	< 1	2,078,229.4	15		
Status 4	15,127,706.6	81	11,190.6	< 1	15,236,218.9	81		
Total	15,128,959.1	81	11,191.8	< 1	18,009,566.3	100		

GAP Status 1: An area having permanent protection from conversion of natural land cover and a mandated management plan in operation to maintain a natural state within which disturbance events (of natural type, frequency, and intensity) are allowed to proceed without interference or are mimicked through management.

GAP Status 2: An area having permanent protection from conversion of natural land cover and a mandated management plan in operation to maintain a primarily natural state, but which may receive use or management practices that degrade the quality of existing natural communities.

GAP Status 3: An area having permanent protection from conversion of natural land cover for the majority of the area, but subject to extractive uses of either a broad, low-intensity type or localized intense type. It also confers protection to federally listed endangered and threatened species throughout the area.

GAP Status 4: Lack of irrevocable easement or mandate to prevent conversion of natural habitat types to anthropogenic habitat types. Allows for intensive use throughout the tract. Also includes those tracts for which the existence of such restrictions or sufficient information to establish a higher status is unknown.

PREDICTED HABITAT MODEL(S):

Year-round Model:

Habitat Description: Pygmy rattlesnakes may be encountered in a wide array of habitats throughout the Southeast. They can be found in bottomland hardwood or mixed forest, pine flatwoods, swamps and wet savannas, as well as drier situations such as upland mixed forest and longleaf pine-scrub oak. This species is Generally associated with moist habitats, but may be found in dry situations (Dundee and Rossman 1989). NatureServe, identifies pygmy rattlesnakes as occurring in "everglades prairie, wet savannas, palmetto-pine flatwoods, swamps, hardwood-dominated floodplains, sandhills, mixed pine-hardwood forest, borders of cypress ponds, vicinity of lakes and marshes; most common in moist or wet lowlands."

Ecosystem Classifiers: Evergreen, Mixed, & Maritime Forests, Bare Sand, Flatwoods, Shrub.scrub, Domes/Hammocks, Floodplain/Riparian. 29Aug05 Amy Silvano

Hydrography Mask:

Freshwater Only

Utilizes flowing water features with buffer of 2000m from selected water features.

Utilizes open water features with buffer of 2000m from selected water features.

Utilizes wet vegetation features with buffers of 2000m from and unlimited into selected vegetation features.

Selected Map Units:

Functional Group	Map Unit Name
Anthropogenic	Bare Sand
Forest/Woodland	Allegheny-Cumberland Dry Oak Forest and Woodland - Pine Modifier
Forest/Woodland	Atlantic Coastal Plain Central Maritime Forest
Forest/Woodland	Atlantic Coastal Plain Fall-Line Sandhills Longleaf Pine Woodland - Loblolly Modifier
Forest/Woodland	Atlantic Coastal Plain Fall-line Sandhills Longleaf Pine Woodland - Open Understory Modifier
Forest/Woodland	Atlantic Coastal Plain Fall-line Sandhills Longleaf Pine Woodland - Scrub/Shrub Understory Modifier
Forest/Woodland	Atlantic Coastal Plain Northern Maritime Forest
Forest/Woodland	Atlantic Coastal Plain Northern Mixed Oak-Heath Forest
Forest/Woodland	Atlantic Coastal Plain Southern Maritime Forest
Forest/Woodland	Atlantic Coastal Plain Upland Longleaf Pine Woodland
Forest/Woodland	Central Appalachian Oak and Pine Forest
Forest/Woodland	East Gulf Coastal Plain Interior Shortleaf Pine-Oak Forest - Mixed Modifier
Forest/Woodland	East Gulf Coastal Plain Interior Shortleaf Pine-Oak Forest - Pine Modifier
Forest/Woodland	East Gulf Coastal Plain Interior Upland Longleaf Pine Woodland - Loblolly Modifier
Forest/Woodland	East Gulf Coastal Plain Interior Upland Longleaf Pine Woodland - Open Understory Modifier
Forest/Woodland	East Gulf Coastal Plain Interior Upland Longleaf Pine Woodland - Scrub/Shrub Modifier
Forest/Woodland	East Gulf Coastal Plain Maritime Forest
Forest/Woodland	East Gulf Coastal Plain Northern Loess Plain Oak-Hickory Upland - Juniper Modifier
Forest/Woodland	Florida Longleaf Pine Sandhill - Open Understory Modifier
Forest/Woodland	Florida Longleaf Pine Sandhill - Scrub/Shrub Understory Modifier
Forest/Woodland	Mississippi Delta Maritime Forest
Forest/Woodland	Northeastern Interior Dry Oak Forest - Mixed Modifier
Forest/Woodland	Northeastern Interior Dry Oak Forest - Virginia/Pitch Pine Modifier
Forest/Woodland	Southeast Florida Coastal Strand and Maritime Hammock
Forest/Woodland	Southeastern Interior Longleaf Pine Woodland
Forest/Woodland	Southern Appalachian Low Mountain Pine Forest
Forest/Woodland	Southern Coastal Plain Oak Dome and Hammock
Forest/Woodland	Southern Piedmont Dry Oak-(Pine) Forest - Loblolly Pine Modifier
Forest/Woodland	Southern Piedmont Dry Oak-Heath Forest - Mixed Modifier
Forest/Woodland	Southern Piedmont Dry Oak-Heath Forest - Virginia/Pitch Pine Modifier
Forest/Woodland	Southern Ridge and Valley Dry Calcareous Forest - Pine Modifier
Forest/Woodland	Southwest Florida Coastal Strand and Maritime Hammock
Wetlands	Atlantic Coastal Plain Blackwater Stream Floodplain Forest - Forest Modifier
Wetlands	Atlantic Coastal Plain Brownwater Stream Floodplain Forest

Wetlands	Atlantic Coastal Plain Nonriverine Swamp and Wet Hardwood Forest - Taxodium/Nyssa Modifier
Wetlands	Atlantic Coastal Plain Nonriverine Swamp and Wet Hardwood Forest - Oak Dominated Modifier
Wetlands	Atlantic Coastal Plain Northern Basin Peat Swamp
Wetlands	Atlantic Coastal Plain Northern Wet Longleaf Pine Savanna and Flatwoods
Wetlands	Atlantic Coastal Plain Small Blackwater River Floodplain Forest
Wetlands	Atlantic Coastal Plain Small Brownwater River Floodplain Forest
Wetlands	Atlantic Coastal Plain Southern Wet Pine Savanna and Flatwoods
Wetlands	Central Appalachian Floodplain - Forest Modifier
Wetlands	Central Appalachian Riparian - Forest Modifier
Wetlands	Central Florida Pine Flatwoods
Wetlands	East Gulf Coastal Plain Interior Shrub Bog
Wetlands	East Gulf Coastal Plain Jackson Plain Dry Flatwoods - Open Understory Modifier
Wetlands	East Gulf Coastal Plain Jackson Plain Dry Flatwoods - Scrub/Shrub Understory Modifier
Wetlands	East Gulf Coastal Plain Large River Floodplain Forest - Forest Modifier
Wetlands	East Gulf Coastal Plain Near-Coast Pine Flatwoods - Offsite Hardwood Modifier
Wetlands	East Gulf Coastal Plain Near-Coast Pine Flatwoods - Open Understory Modifier
Wetlands	East Gulf Coastal Plain Near-Coast Pine Flatwoods - Scrub/Shrub Understory Modifier
Wetlands	East Gulf Coastal Plain Small Stream and River Floodplain Forest
Wetlands	East Gulf Coastal Plain Southern Loblolly-Hardwood Flatwoods
Wetlands	East Gulf Coastal Plain Treeless Savanna and Wet Prairie
Wetlands	Lower Mississippi River Bottomland and Floodplain Forest
Wetlands	Lower Mississippi River Bottomland Depressions - Forest Modifier
Wetlands	Mississippi River Low Floodplain (Bottomland) Forest
Wetlands	Mississippi River Riparian Forest
Wetlands	South Florida Bayhead Swamp
Wetlands	South Florida Cypress Dome
Wetlands	South Florida Dwarf Cypress Savanna
Wetlands	South Florida Hardwood Hammock
Wetlands	South Florida Pine Flatwoods
Wetlands	South Florida Wet Marl Prairie
Wetlands	South-Central Interior Large Floodplain - Forest Modifier
Wetlands	South-Central Interior Small Stream and Riparian
Wetlands	South-Central Interior/Upper Coastal Plain Wet Flatwoods
Wetlands	Southern Coastal Plain Blackwater River Floodplain Forest
Wetlands	Southern Coastal Plain Hydric Hammock
Wetlands	Southern Coastal Plain Nonriverine Cypress Dome
Wetlands	Southern Piedmont Large Floodplain Forest - Forest Modifier
Wetlands	Southern Piedmont Small Floodplain and Riparian Forest

- CITATIONS:** Ashton, R. E., Jr., and P. S. Ashton. 1981. Handbook of Reptiles and Amphibians of Florida. Part One: The Snakes. Windward Pub. Co., Miami, Florida. 176 pp.
- Behler, J. L., and F. W. King. 1979. The Audubon Society field guide to North American reptiles and amphibians. Alfred A. Knopf, New York. 719 pp.
- Campbell, J. A., and E. D. Brodie, Jr., editors. Biology of the pit vipers. Selva, Tyler, Texas.
- Conant, R. 1975. A Field Guide to Reptiles and Amphibians of Eastern and Central North America. Second Edition. Houghton Mifflin Company, Boston, Massachusetts. xvii + 429 pp.
- Conant, R. and J. T. Collins. 1991. A field guide to reptiles and amphibians: eastern and central North America. Third edition. Houghton Mifflin Co., Boston, Massachusetts. 450 pp.
- Ernst, C. H. 1992. Venomous reptiles of North America. Smithsonian Inst. Press, Washington, D.C. ix + 236 pp.
- Ernst, C. H., and R. W. Barbour. 1989. Snakes of eastern North America. George Mason Univ. Press, Fairfax, Virginia. 282 pp.
- Gibbons, J. W., and R. D. Semlitsch. 1991. Guide to the reptiles and amphibians of the Savannah River Site. Univ. of Georgia Press, Athens. xii + 131 pp.
- Gloyd, H. 1940. The rattlesnakes. Chicago Academy Science, Special Publication No. 4.

- Hudnall, J. A. 1979. Surface activity and horizontal movements in a marked population of *SISTRURUS MILIARIUS BARBOURI*. Bull. Maryland Herpetol. Soc. 15:134-138.
- Johnson, T. R. 1987. The amphibians and reptiles of Missouri. Missouri Department of Conservation, Jefferson City. 368 pp.
- Klauber, L. M. 1972. Rattlesnakes: their habits, life histories, and influence on mankind. Second edition. Two volumes. Univ. California Press, Berkeley.
- Knight, A., et al. 1993. Choosing among hypotheses of rattlesnake phylogeny: a best-fit rate test for DNA sequence data. Syst. Biol. 42:356-367.
- Martof, B. S., W. M. Palmer, J. R. Bailey, and J. R. Harrison, III. 1980. Amphibians and reptiles of the Carolinas and Virginia. University of North Carolina Press, Chapel Hill, North Carolina. 264 pp.
- May, P. G., et al. 1996. Seasonal abundance and activity of a rattlesnake (*SISTRURUS MILIARIUS BARBOURI*) in central Florida. Copeia 1996:389-401.
- McCranie, J. R. 1988. Description of the hemipenes of *SISTRURUS RAVUS* (Serpentes: Viperidae). Herpetologica 44:123-126.
- Mount, R. H. 1975. The Reptiles and Amphibians of Alabama. Auburn University Agricultural Experiment Station, Auburn, Alabama. vii + 347 pp.
- Palmer, W. M. 1978. *Sistrurus miliarius*. Cat. Am. Amph. Rep. 220.1-220.2.
- Tennant, A. 1984. The Snakes of Texas. Texas Monthly Press, Austin, Texas. 561 pp.
- Webb, R. G. 1970. Reptiles of Oklahoma. University of Oklahoma Press, Norman. 370 pp.

For more information:: SE-GAP Analysis Project / BaSIC
127 David Clark Labs
Dept. of Biology, NCSU
Raleigh, NC 27695-7617
(919) 513-2853
www.basic.ncsu.edu/segap

Compiled: 15 September 2011

This data was compiled and/or developed
by the Southeast GAP Analysis Project at
The Biodiversity and Spatial Information
Center, North Carolina State University.