



SOUTHEAST GAP ANALYSIS PROJECT



Species Modeling Report

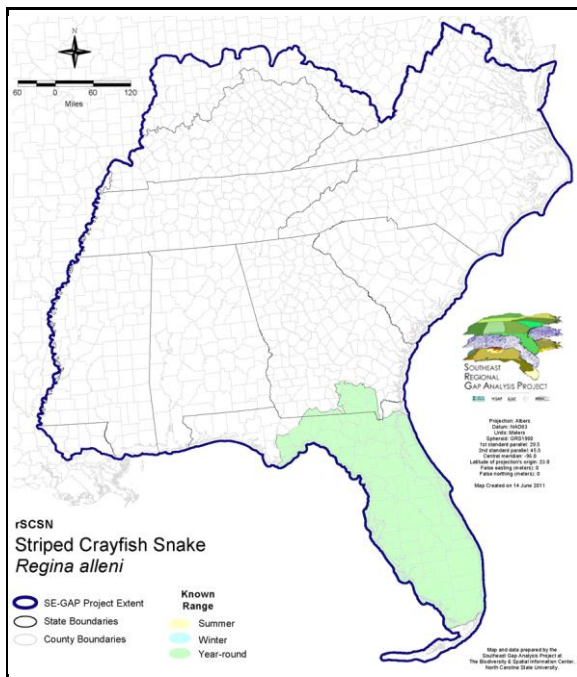
Striped Crayfish Snake

Regina alleni

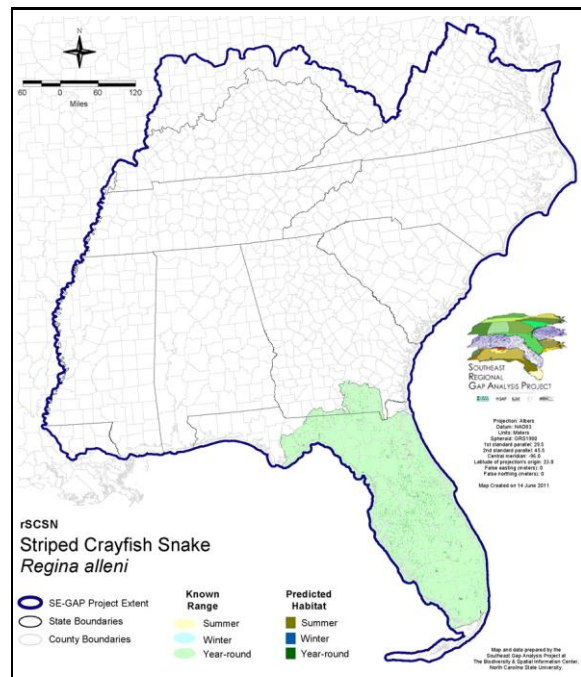
Taxa: Reptilian
 Order: Squamata
 Family: Colubridae

SE-GAP Spp Code: **rSCSN**
 ITIS Species Code: 174126
 NatureServe Element Code: ARADB27010

KNOWN RANGE:



PREDICTED HABITAT:



Range Map Link: http://www.basic.ncsu.edu/segap/datazip/maps/SE_Range_rSCSN.pdf

Predicted Habitat Map Link: http://www.basic.ncsu.edu/segap/datazip/maps/SE_Dist_rSCSN.pdf

GAP Online Tool Link: <http://www.gapservice.ncsu.edu/segap/segap/index2.php?species=rSCSN>

Data Download: http://www.basic.ncsu.edu/segap/datazip/region/vert/rSCSN_se00.zip

PROTECTION STATUS:

Reported on March 14, 2011

Federal Status: ---
 State Status: ---
 NS Global Rank: G5
 NS State Rank: FL (SNR), GA (S2)

SUMMARY OF PREDICTED HABITAT BY MANAGMENT AND GAP PROTECTION STATUS:

	US FWS		US Forest Service		Tenn. Valley Author.		US DOD/ACOE	
	ha	%	ha	%	ha	%	ha	%
Status 1	4,698.5	2	17.5	< 1	0.0	0	0.0	0
Status 2	3,282.5	1	1,808.3	< 1	0.0	0	0.0	0
Status 3	0.0	0	6,946.7	2	0.0	0	1,720.4	< 1
Status 4	0.6	< 1	0.0	0	0.0	0	0.0	0
Total	7,981.6	3	8,772.5	3	0.0	0	1,720.4	< 1
	US Dept. of Energy		US Nat. Park Service		NOAA		Other Federal Lands	
	ha	%	ha	%	ha	%	ha	%
Status 1	0.0	0	4,431.8	2	0.0	0	568.9	< 1
Status 2	0.0	0	866.9	< 1	979.3	< 1	0.6	< 1
Status 3	0.0	0	1,277.5	< 1	0.0	0	0.0	0
Status 4	0.0	0	0.0	0	0.0	0	0.0	0
Total	0.0	0	6,576.1	2	979.3	< 1	569.5	< 1
	Native Am. Reserv.		State Park/Hist. Park		State WMA/Gameland		State Forest	
	ha	%	ha	%	ha	%	ha	%
Status 1	0.0	0	0.0	0	0.0	0	0.0	0
Status 2	0.0	0	1.4	< 1	12,548.3	5	0.0	0
Status 3	0.0	0	24,202.6	9	1.4	< 1	5,879.3	2
Status 4	0.0	0	0.0	0	0.0	0	0.0	0
Total	0.0	0	24,204.1	9	12,549.8	5	5,879.3	2
	State Coastal Reserve		ST Nat.Area/Preserve		Other State Lands		Private Cons. Easemt.	
	ha	%	ha	%	ha	%	ha	%
Status 1	0.0	0	0.0	0	0.0	0	0.0	0
Status 2	48.5	< 1	180.7	< 1	0.0	0	117.5	< 1
Status 3	0.0	0	985.7	< 1	454.5	< 1	2,946.3	1
Status 4	0.0	0	0.0	0	39.6	< 1	0.0	0
Total	48.5	< 1	1,166.4	< 1	494.1	< 1	3,063.8	1
	Private Land - No Res.		Water		Overall Total			
	ha	%	ha	%	ha	%	ha	%
Status 1	0.0	0	0.0	0	9,716.6 3			
Status 2	0.6	< 1	0.0	0	19,834.7 7			
Status 3	4.8	< 1	0.0	0	44,419.2 18			
Status 4	181,675.6	65	15,903.7	6	197,618.9 71			
Total	181,681.0	65	15,903.7	6	271,589.4 100			

GAP Status 1: An area having permanent protection from conversion of natural land cover and a mandated management plan in operation to maintain a natural state within which disturbance events (of natural type, frequency, and intensity) are allowed to proceed without interference or are mimicked through management.

GAP Status 2: An area having permanent protection from conversion of natural land cover and a mandated management plan in operation to maintain a primarily natural state, but which may receive use or management practices that degrade the quality of existing natural communities.

GAP Status 3: An area having permanent protection from conversion of natural land cover for the majority of the area, but subject to extractive uses of either a broad, low-intensity type or localized intense type. It also confers protection to federally listed endangered and threatened species throughout the area.

GAP Status 4: Lack of irrevocable easement or mandate to prevent conversion of natural habitat types to anthropogenic habitat types. Allows for intensive use throughout the tract. Also includes those tracts for which the existence of such restrictions or sufficient information to establish a higher status is unknown.

PREDICTED HABITAT MODEL(S):

Year-round Model:

Habitat Description: Primarily aquatic the striped crayfish snake can be found in swamps, ponds, sloughs, lakes, marshes and slow moving waters (Ashton 1988, Conant & Collins 1998). Typical habitat includes cypress stands, sawgrass prairies, and sphagnum bogs (FMNH 2005), especially in areas with an abundance of floating vegetation such as water hyacinth (Ashton 1988, FL-GAP 2002), Conant & Collins 1998). Amy Silvano 23Aug05

Ecosystem Classifiers: Wetlands, Shrub/scrub, Domes/Hammocks, Depressional, Floodplain
Amy Silvano 23Aug05

Hydrography Mask:

Slow Current Only

Utilizes flowing water features with buffers of 30m from and 120m into selected water features.

Utilizes open water features with buffers of 30m from and 120m into selected water features.

Selected Map Units:

Functional Group	Map Unit Name
Brackish Tidal Marsh & Wetland	Florida Big Bend Salt-Brackish Tidal Marsh
Brackish Tidal Marsh & Wetland	South Florida Everglades Sawgrass Marsh
Brackish Tidal Marsh & Wetland	Southwest Florida Perched Barriers Salt Swamp and Lagoon - Marsh Modifier
Freshwater Tidal Marsh & Wetland	Florida Big Bend Fresh-Oligohaline Tidal Marsh
Water	Open Water (Fresh)
Wetlands	Central Florida Herbaceous Pondshore
Wetlands	Central Florida Herbaceous Seep
Wetlands	East Gulf Coastal Plain Interior Shrub Bog
Wetlands	East Gulf Coastal Plain Large River Floodplain Forest - Forest Modifier
Wetlands	East Gulf Coastal Plain Large River Floodplain Forest - Herbaceous Modifier
Wetlands	East Gulf Coastal Plain Small Stream and River Floodplain Forest
Wetlands	East Gulf Coastal Plain Southern Depression Pondshore
Wetlands	East Gulf Coastal Plain Treeless Savanna and Wet Prairie
Wetlands	Floridian Highlands Freshwater Marsh
Wetlands	South Florida Bayhead Swamp
Wetlands	South Florida Cypress Dome
Wetlands	South Florida Dwarf Cypress Savanna
Wetlands	South Florida Freshwater Slough and Gator Hole
Wetlands	South Florida Pond-Apple/Popash Slough
Wetlands	South Florida Wet Marl Prairie
Wetlands	South Florida Willow Head
Wetlands	Southern Coastal Plain Blackwater River Floodplain Forest
Wetlands	Southern Coastal Plain Herbaceous Seepage Bog
Wetlands	Southern Coastal Plain Nonriverine Basin Swamp
Wetlands	Southern Coastal Plain Nonriverine Cypress Dome
Wetlands	Southern Coastal Plain Seepage Swamp and Baygall

CITATIONS: Florida Museum of Natural History (FMNH) Online Guide to Snakes of Florida. 2005.
<http://www.flmnh.ufl.edu/natsci/herpetology/herpetology.htm>

For more information:: SE-GAP Analysis Project / BaSIC
127 David Clark Labs
Dept. of Biology, NCSU
Raleigh, NC 27695-7617
(919) 513-2853
www.basic.ncsu.edu/segap

Compiled: 15 September 2011

This data was compiled and/or developed by the Southeast GAP Analysis Project at The Biodiversity and Spatial Information Center, North Carolina State University.