



SOUTHEAST GAP ANALYSIS PROJECT



Species Modeling Report

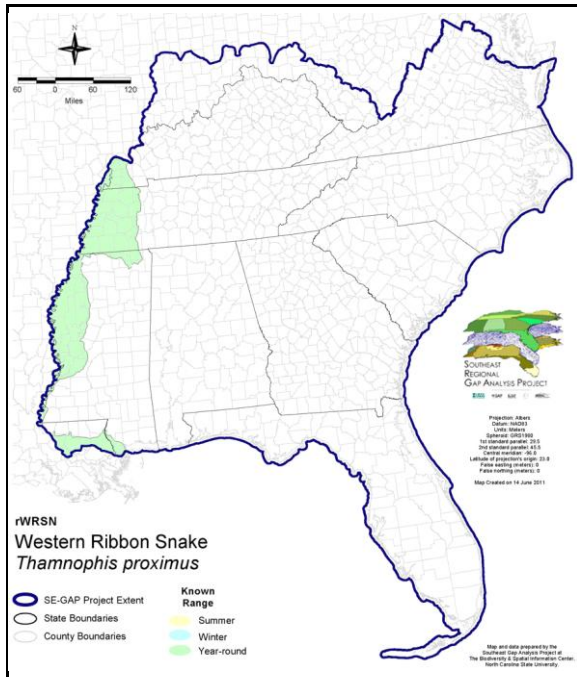
Western Ribbon Snake

Thamnophis proximus

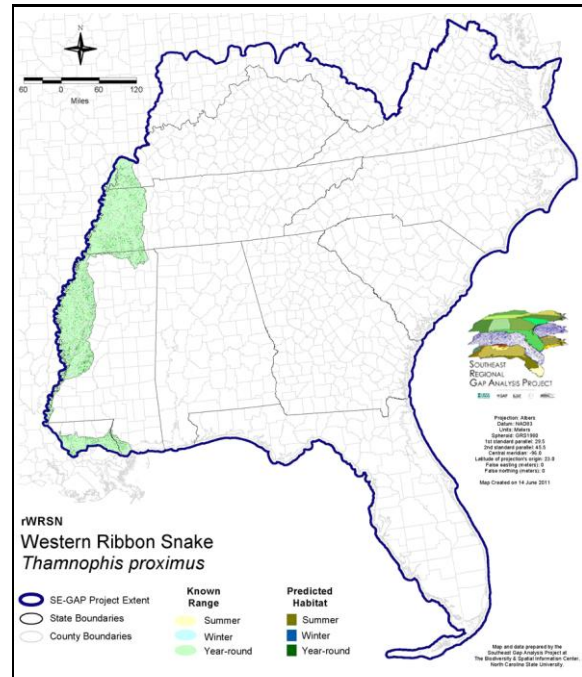
Taxa: Reptilian
Order: Squamata
Family: Colubridae

SE-GAP Spp Code: **rWRSN**
ITIS Species Code: 174146
NatureServe Element Code: ARADB36090

KNOWN RANGE:



PREDICTED HABITAT:



Range Map Link: http://www.basic.ncsu.edu/segap/datazip/maps/SE_Range_rWRSN.pdf

Predicted Habitat Map Link: http://www.basic.ncsu.edu/segap/datazip/maps/SE_Dist_rWRSN.pdf

GAP Online Tool Link: <http://www.gapservice.ncsu.edu/segap/segap/index2.php?species=rWRSN>

Data Download: http://www.basic.ncsu.edu/segap/datazip/region/vert/rWRSN_se00.zip

PROTECTION STATUS:

Reported on March 14, 2011

Federal Status: ---

State Status: KY (N), MS (Non-game species in need of management), NE (NC), NM (T), WI (END)

NS Global Rank: G5

NS State Rank: AR (S5), CO (SH), IA (S5), IL (S4), IN (SNR), KS (S5), KY (S1S2), LA (S5), MO (SNR), MS (S5), NE (S2), NM (S3), OK (S5), TN (S4S5), TX (S5), WI (S1)

SUMMARY OF PREDICTED HABITAT BY MANAGMENT AND GAP PROTECTION STATUS:

	US FWS		US Forest Service		Tenn. Valley Author.		US DOD/ACOE	
	ha	%	ha	%	ha	%	ha	%
Status 1	488.0	< 1	0.0	0	0.0	0	0.0	0
Status 2	7,679.1	2	53.6	< 1	0.0	0	0.0	0
Status 3	0.0	0	1,562.9	< 1	0.0	0	515.3	< 1
Status 4	0.0	0	0.0	0	0.0	0	0.0	0
Total	8,167.1	2	1,616.5	< 1	0.0	0	515.3	< 1
	US Dept. of Energy		US Nat. Park Service		NOAA		Other Federal Lands	
	ha	%	ha	%	ha	%	ha	%
Status 1	0.0	0	0.0	0	0.0	0	0.0	0
Status 2	0.0	0	0.0	0	0.0	0	0.0	0
Status 3	0.0	0	109.4	< 1	0.0	0	714.6	< 1
Status 4	0.0	0	0.0	0	0.0	0	0.0	0
Total	0.0	0	109.4	< 1	0.0	0	714.6	< 1
	Native Am. Reserv.		State Park/Hist. Park		State WMA/Gameland		State Forest	
	ha	%	ha	%	ha	%	ha	%
Status 1	0.0	0	0.0	0	0.0	0	0.0	0
Status 2	0.0	0	0.8	< 1	4,199.9	< 1	0.0	0
Status 3	0.0	0	309.5	< 1	3,173.7	< 1	0.0	0
Status 4	0.0	0	0.0	0	215.6	< 1	0.0	0
Total	0.0	0	310.3	< 1	7,589.1	2	0.0	0
	State Coastal Reserve		ST Nat.Area/Preserve		Other State Lands		Private Cons. Easemt.	
	ha	%	ha	%	ha	%	ha	%
Status 1	0.0	0	< 0.1	< 1	0.0	0	0.0	0
Status 2	268.3	< 1	972.7	< 1	0.0	0	0.0	0
Status 3	0.0	0	0.0	0	2.6	< 1	2,882.4	< 1
Status 4	0.0	0	0.0	0	0.0	0	0.0	0
Total	268.3	< 1	972.8	< 1	2.6	< 1	2,882.4	< 1
	Private Land - No Res.		Water		Overall Total			
	ha	%	ha	%	ha	%		
Status 1	0.0	0	0.0	0	488.1	< 1		
Status 2	0.0	0	0.0	0	13,174.3	3		
Status 3	0.0	0	0.0	0	9,270.4	3		
Status 4	398,282.1	93	3,355.2	< 1	402,068.4	94		
Total	398,282.1	93	3,355.2	< 1	425,001.2	100		

GAP Status 1: An area having permanent protection from conversion of natural land cover and a mandated management plan in operation to maintain a natural state within which disturbance events (of natural type, frequency, and intensity) are allowed to proceed without interference or are mimicked through management.

GAP Status 2: An area having permanent protection from conversion of natural land cover and a mandated management plan in operation to maintain a primarily natural state, but which may receive use or management practices that degrade the quality of existing natural communities.

GAP Status 3: An area having permanent protection from conversion of natural land cover for the majority of the area, but subject to extractive uses of either a broad, low-intensity type or localized intense type. It also confers protection to federally listed endangered and threatened species throughout the area.

GAP Status 4: Lack of irrevocable easement or mandate to prevent conversion of natural habitat types to anthropogenic habitat types. Allows for intensive use throughout the tract. Also includes those tracts for which the existence of such restrictions or sufficient information to establish a higher status is unknown.

PREDICTED HABITAT MODEL(S):

Year-round Model:

Habitat Description: Western ribbon snakes are a semi-aquatic species, usually remaining within close proximity of permanent or semipermanent water (Barbour 1971, Conant & Collins 1998). This species prefers damp open situations such as weedy or grassy areas, but will sometimes enter wet woodlands (Wilson 1995, Barbour 1971). Amy Silvano 25aug05

NatureServe 2005: 'Vicinity of streams, lakes, ponds, sloughs, swamps, and marshes. Often in water-edge vegetation. Sometimes in terrestrial habitats but generally close to water.'

Ecosystem classifiers: Semi-aquatic species. Select all MU's within hydro-buffer. Amy Silvano 25Aug05

Hydrography Mask:

Freshwater Only

Utilizes flowing water features with buffers of 120m from and 60m into selected water features.

Utilizes open water features with buffers of 120m from and 60m into selected water features.

Utilizes wet vegetation features with buffers of 60m from and 60m into selected vegetation features.

Selected Map Units:

Functional Group	Map Unit Name
Anthropogenic	Pasture/Hay
Anthropogenic	Successional Grassland/Herbaceous
Anthropogenic	Successional Grassland/Herbaceous (Other)
Anthropogenic	Successional Grassland/Herbaceous (Utility Swath)
Forest/Woodland	East Gulf Coastal Plain Black Belt Calcareous Prairie and Woodland - Woodland Modifier
Prairie	East Gulf Coastal Plain Black Belt Calcareous Prairie and Woodland
Prairie	East Gulf Coastal Plain Black Belt Calcareous Prairie and Woodland - Herbaceous Modifier
Water	Open Water (Fresh)
Wetlands	Atlantic Coastal Plain Blackwater Stream Floodplain Forest - Forest Modifier
Wetlands	East Gulf Coastal Plain Large River Floodplain Forest - Forest Modifier
Wetlands	East Gulf Coastal Plain Large River Floodplain Forest - Herbaceous Modifier
Wetlands	East Gulf Coastal Plain Northern Seepage Swamp
Wetlands	Lower Mississippi River Bottomland and Floodplain Forest
Wetlands	Lower Mississippi River Bottomland Depressions - Herbaceous Modifier
Wetlands	Mississippi River Low Floodplain (Bottomland) Forest
Wetlands	Mississippi River Riparian Forest
Wetlands	Southern Coastal Plain Blackwater River Floodplain Forest
Wetlands	Southern Coastal Plain Hydric Hammock
Wetlands	Southern Coastal Plain Nonriverine Basin Swamp

CITATIONS:

For more information: SE-GAP Analysis Project / BaSIC
127 David Clark Labs
Dept. of Biology, NCSU
Raleigh, NC 27695-7617
(919) 513-2853
www.basic.ncsu.edu/segap

Compiled: 15 September 2011

This data was compiled and/or developed by the Southeast GAP Analysis Project at The Biodiversity and Spatial Information Center, North Carolina State University.