



SOUTHEAST GAP ANALYSIS PROJECT



Species Modeling Report

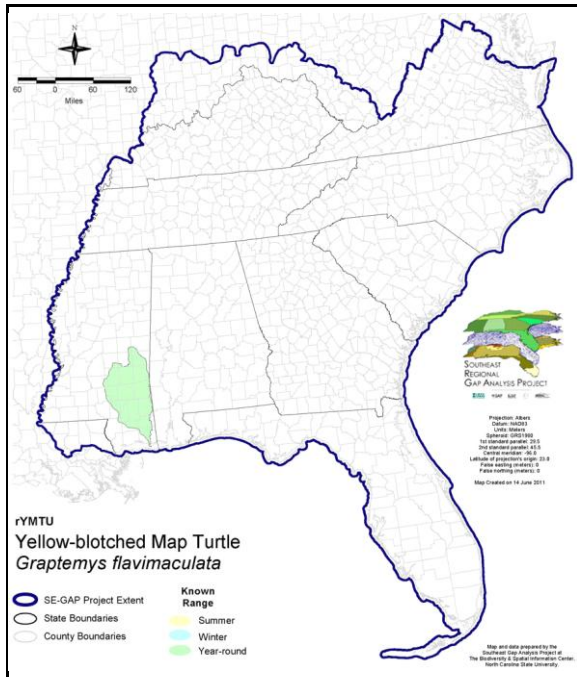
Yellow-blotched Map Turtle

Graptemys flavimaculata

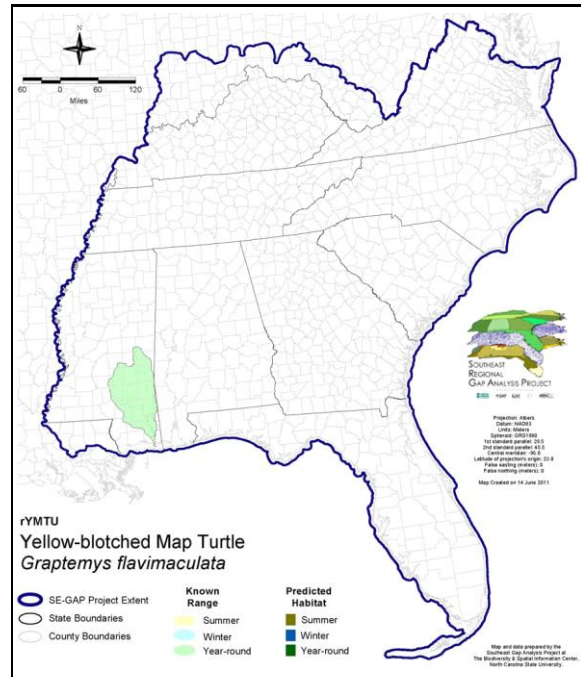
Taxa: Reptilian
 Order: Cryptodeira
 Family: Emydidae

SE-GAP Spp Code: **rYMTU**
 ITIS Species Code: 173793
 NatureServe Element Code: ARAAD05030

KNOWN RANGE:



PREDICTED HABITAT:



Range Map Link: http://www.basic.ncsu.edu/segap/datazip/maps/SE_Range_rYMTU.pdf

Predicted Habitat Map Link: http://www.basic.ncsu.edu/segap/datazip/maps/SE_Dist_rYMTU.pdf

GAP Online Tool Link: <http://www.gapservice.ncsu.edu/segap/segap/index2.php?species=rYMTU>

Data Download: http://www.basic.ncsu.edu/segap/datazip/region/vert/rYMTU_se00.zip

PROTECTION STATUS:

Reported on March 14, 2011

Federal Status: LT
 State Status: MS (LE)
 NS Global Rank: G2
 NS State Rank: MS (S2)

SUMMARY OF PREDICTED HABITAT BY MANAGMENT AND GAP PROTECTION STATUS:

	US FWS		US Forest Service		Tenn. Valley Author.		US DOD/ACOE	
	ha	%	ha	%	ha	%	ha	%
Status 1	0.0	0	0.0	0	0.0	0	0.0	0
Status 2	0.0	0	0.0	0	0.0	0	0.0	0
Status 3	0.0	0	0.0	0	0.0	0	0.0	0
Status 4	0.0	0	0.0	0	0.0	0	0.0	0
Total	0.0	0	0.0	0	0.0	0	0.0	0
	US Dept. of Energy		US Nat. Park Service		NOAA		Other Federal Lands	
	ha	%	ha	%	ha	%	ha	%
Status 1	0.0	0	0.0	0	0.0	0	0.0	0
Status 2	0.0	0	0.0	0	0.0	0	0.0	0
Status 3	0.0	0	0.0	0	0.0	0	0.0	0
Status 4	0.0	0	0.0	0	0.0	0	0.0	0
Total	0.0	0	0.0	0	0.0	0	0.0	0
	Native Am. Reserv.		State Park/Hist. Park		State WMA/Gameland		State Forest	
	ha	%	ha	%	ha	%	ha	%
Status 1	0.0	0	0.0	0	0.0	0	0.0	0
Status 2	0.0	0	0.0	0	16.1	3	0.0	0
Status 3	0.0	0	0.0	0	0.0	0	0.0	0
Status 4	0.0	0	0.0	0	0.0	0	0.0	0
Total	0.0	0	0.0	0	16.1	3	0.0	0
	State Coastal Reserve		ST Nat.Area/Preserve		Other State Lands		Private Cons. Easemt.	
	ha	%	ha	%	ha	%	ha	%
Status 1	0.0	0	0.0	0	0.0	0	0.0	0
Status 2	0.4	< 1	0.0	0	0.0	0	0.0	0
Status 3	0.0	0	0.0	0	0.0	0	0.0	0
Status 4	0.0	0	0.0	0	0.0	0	0.0	0
Total	0.4	< 1	0.0	0	0.0	0	0.0	0
	Private Land - No Res.		Water		Overall Total			
	ha	%	ha	%	ha	%	ha	%
Status 1	0.0	0	0.0	0	0.0	0	0.0	0
Status 2	0.0	0	0.0	0	16.5	3	16.5	3
Status 3	0.0	0	0.0	0	0.0	0	0.0	0
Status 4	470.6	75	141.3	22	611.9	97	611.9	97
Total	470.6	75	141.3	22	628.4	100	628.4	100

GAP Status 1: An area having permanent protection from conversion of natural land cover and a mandated management plan in operation to maintain a natural state within which disturbance events (of natural type, frequency, and intensity) are allowed to proceed without interference or are mimicked through management.

GAP Status 2: An area having permanent protection from conversion of natural land cover and a mandated management plan in operation to maintain a primarily natural state, but which may receive use or management practices that degrade the quality of existing natural communities.

GAP Status 3: An area having permanent protection from conversion of natural land cover for the majority of the area, but subject to extractive uses of either a broad, low-intensity type or localized intense type. It also confers protection to federally listed endangered and threatened species throughout the area.

GAP Status 4: Lack of irrevocable easement or mandate to prevent conversion of natural habitat types to anthropogenic habitat types. Allows for intensive use throughout the tract. Also includes those tracts for which the existence of such restrictions or sufficient information to establish a higher status is unknown.

PREDICTED HABITAT MODEL(S):

Year-round Model:

Habitat Description: Yellow-blotched map turtle is a riverine turtle restricted to the Pascagoula River Drainage in Mississippi, occurring in the Pascagoula, Leaf, and Chickasawhay Rivers. (USFWS Species Account, www.fws.gov/endangered/i/c/sac2z.html). This species can be found in rivers, larges creeks and oxbow lakes and they generally avoid smaller streams because the water is shaded by vegetation during the day (USFWS 1993). Their preferred habitat can be characterized as wide riverine systems with moderate to strong currents that contain adjacent white sandy beaches or sandbars for nesting as well as, an abundance of tree or log debris for basking structures (Horne et al. 2003, Ernst et al. 1994). Amy Silvano 6Jul05

Ecosystem Classifiers: Aquatic species, only terrestrial systems selected apply to nesting habitat. Flow Accumulation may be a good predictor for this species since it needs wider, moving rivers and streams. Probably could set minimum threshold for accumulation, can't find any literature to support and type of slope, threshold etc., but in CP could probably use min of 5-10. Amy Silvano 6jul05

Hydrography Mask:

Freshwater Only

Utilizes flowing water features with buffers of 30m from and 120m into selected water features.

Utilizes open water features with buffer of 30m from selected water features.

Selected Map Units:

Functional Group	Map Unit Name
Anthropogenic	Bare Sand
Anthropogenic	Bare Soil
Beach	Unconsolidated Shore (Beach/Dune)
Water	Open Water (Fresh)
Wetlands	Unconsolidated Shore (Lake/River/Pond)

CITATIONS: Horne, Brian D., Brauman, Robert J., Moore, Megan J. C., Seigel, Richard A. 2003. Reproductive and Nesting Ecology of the Yellow-Blotched Map Turtle, *Graptemys flavimaculata*: Implications for Conservation and Management. *Copeia* 729-738

U.S. Fish and Wildlife Service (USFWS). 1993. Yellow-blotched map turtle (*Graptemys flavimaculata*) recovery plan. U.S. Fish and Wildlife Service. Jackson, Mississippi. 18 pp.

For more information:: SE-GAP Analysis Project / BaSIC
127 David Clark Labs
Dept. of Biology, NCSU
Raleigh, NC 27695-7617
(919) 513-2853
www.basic.ncsu.edu/segap

Compiled: 15 September 2011

This data was compiled and/or developed by the Southeast GAP Analysis Project at The Biodiversity and Spatial Information Center, North Carolina State University.